

# LIBRARY @ A GLANCE :

CENTRAL LIBRARY, DELHI TECHNOLOGICAL  
UNIVERSITY

PREPARED BY :  
DTU CENTRAL LIBRARY

(01.04.2023 TO 31.03.2024)

011 2787 1022  
[www.library.dtu.ac.in](http://www.library.dtu.ac.in)



# E-BOOKS COLLECTIONS

**21**

Elgar (Management)

CBS (Env't-20, Biotech-5, Civil-24,  
Elec-9, ECE-10)

**68**

**390**

Pearson (Mech-363 &  
Management-27)

T&F (Elec-38, Env't-25 & IT-26)

**89**

**338**

VideeYa (General)

KopyKitab (General)

**20**

**71**

Wiley (Mix)

University Press/ Orient Black  
Swan (Civil-3, Env't-6)

**09**

**330**

Elsevier (Biotech-20, Chem-40, Civil-  
17, CSE-26, Electrical-37,  
ECE-26, IT-22, Env't-36, Mechanical-  
71 & Physics-35) 10 depts

## GENERAL

**No. of Books added:**

06

**Acc. Nos.:**

156222-156227

**Total Books:**

156277



# BOOKS AQUIRED

## GIFT(DONATED)

**No. of Books added:**

77

**Acc. Nos.:**

D6364-D6440

**Total Books:**

6440



## BOOK BANK

**No. of Books added: -**

**Acc. Nos.:**

BB1 - BB58363

**Total Books:**

58363



## SCP

**No. of Books added: -**

**Acc. Nos.:**

SC1-SC9057

**Total Books:**

9047



## E-JOURNALS

2,95,86,077.00



# EXPENDITURE ON ACQUISITION in RS.

## BOOKS

46,207.00



## MAG & NEWS

2,53,598.00



## MISC

50,150.00



2023-24

**Sanctioned Budget  
on e-Journals (In Rs.)**  
5,00,000,00.00

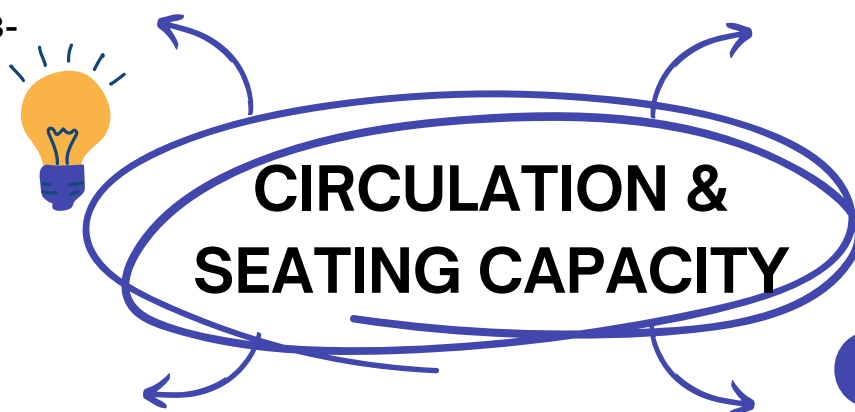
**Sanctioned Budget  
on Books (In Rs.)**  
2,00,000,00.00



## CIRCULATION:

**YEAR (01.04.2023-  
31.03.2024 )**

**ISSUE: 21482  
RE-ISSUE: 7820  
RETURN: 21089**



## SEATING CAPACITY

**Number of seats in  
reading space: 550**





# MEMBERSHIP

01

## TECH. STAFF

No of Members : 24  
Code: 16



02

## ADMIN STAFF

No of Members : 22  
Code: 18



03

## EXECUTIVE

No of Members : 3  
Code: 19



04

## INSTITUTIONAL STAFF

No of Members : 36  
Code: 20



05

## LIBRARY STAFF

No of Members : 13  
Code: 27



06

## DELNET

No of Members : 01  
Code: 37



07

## DEPARTMENT LIBRARY OF DSM

No of Members : 01  
Code: 39



**08**

## **PHD**

No of Members : 1165  
Code: 15



**09**

## **ME (NOW M.TECH)**

No of Members : 433  
Code: 13



**10**

## **RESERVE CATEGORY M.E - 2**

No of Members : 95  
Code: 23



**11**

## **MBA**

No of Members : 316  
Code: 25



**12**

## **MBA (GENERALS) EAST CAMPUS**

No of Members : 295  
Code: 26



**13**

## **MBA (RESERVE CATEGORY) EAST CAMPUS**

No of Members : 28  
Code: 29



**14**

## **MBA (Reserve Category)**

No of Members : 76  
Code: 30



**15**

## **MSC GENERAL**

No of Members : 374  
Code: 40



**16**

## **FACULTY**

No of Members : 213

Code: 17



**17**

## **MSC CATEGORY**

No of Members : 115

Code: 41



**18**

## **M. DESIGN GENERAL**

No of Members : 71

Code: 42



**19**

## **MA (ECONOMICS) CATEGORY**

No of Members : 58

Code: 44



**20**

## **MA (ECONOMICS) GENERAL**

No of Members : 68

Code: 45



**21**

## **LATERAL ENTRY B.TECH**

No of Members : 139

Code: 2



**22**

## **BE (Now B.Tech)**

No of Members : 7324

Code: 11



**23**

## **B. TECH (EVENING)**

No of Members : 346

Code: 12



**24**

## **RESERVE CATEGORY B.E - 2**

No of Members : 3254

Code: 22



**25**

## **BBA GENERAL**

No of Members : 456

Code: 31



**26**

## **BBA CATEGORY**

No of Members : 89

Code: 32



**27**

## **BA GENERAL**

No of Members : 339

Code: 33



**28**

## **BA CATEGORY**

No of Members : 20

Code: 34



**29**

## **B. DESIGN GENERAL**

No of Members : 386

Code: 35



**30**

## **B. Design Category**

No of Members : 70

Code: 36



# COLLECTION

1

**General**

156227

2

**Book Bank**

58363

3

**Book Bank (SCP)**

9057

4

**Book Gifted/ Donated**

6440

5

**Total Books**

230087

6

**No of Titles of Books**

100104

7

**Thesis & Dissertations (Soft)**

7046

8

**National Journals J-Gate**

29640

9

**Manuscripts**

993

10

**Online Journals**

83505

11

**E-Books**

1336

12

**CD of Books**

3261

13

**Newspapers**

18

14

**Magazines printed**

45

15

**Video streaming  
(NPTEL)**

ALL

16

**International  
Journals**

53865

# TRANSACTIONS, PROCEEDINGS, MAGAZINES, TRADE PUB, STANDARD:

45

Transactions (ACM)

994

Conference Proceedings (ACM)

1576

Online Magazines (ACM & EBSCO)

1049

Trade Publication (EBSCO)

4605

Standards (IEEE)

5931

Conference (IEEE)

32237

Proceedings (IEEE)

# E-JOURNALS:

01

**ACM**

Usages for 2023 (Full text downloads) : 5107  
No of Journals: 13



02

**American Institute of Physics**

Usages for 2023 (Full text downloads) : 2315  
No of Journals: 19



03

**American Physical Society**

Usages for 2023 (Full text downloads) : 1134  
No of Journals: 15



04

**EBSCO ULTIMATE**

Usages for 2023 (Full text downloads) : 8963  
No of Journals: 47776



05

**IEEE/IEL**

Usages for 2023 (Full text downloads) : 130255  
No of Journals: 386



06

**Nature**

Usages for 2023 (Full text downloads) : 2238  
No of Journals: 1



07

**J-Gate**

Usages for 2023 (Full text downloads) : 1951  
No of Journals: 29640



# E-JOURNALS:

08

## Oxford University Press

Usages for 2023 (Full text downloads) :489  
No of Journals: 262



09

## Science Direct

Usages for 2023 (Full text downloads) : 155275  
No of Journals: 1217



10

## Springer Link

Usages for 2023 (Full text downloads) : 80500  
No of Journals: 1724



11

## TAYLOR & FRANCIS JOURNAL

Usages for 2023 (Full text downloads) : 7244  
No of Journals: 1078



12

## WILEY ESS JOURNALS COLLECTION

Usages for 2023 (Full text downloads) : New  
No of Journals: 1259



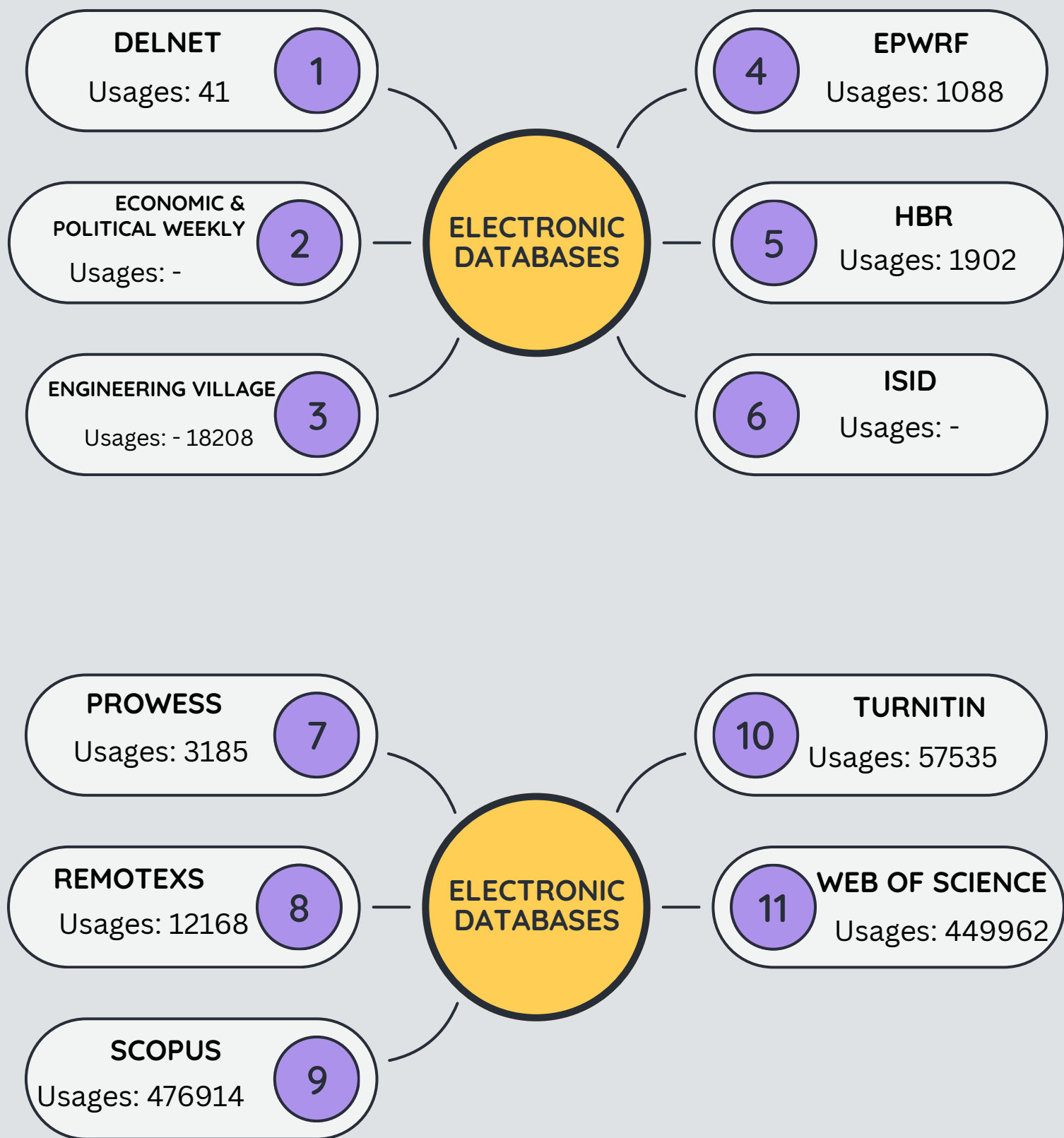
13

## Institute of Physics

Usages for 2023 (Full text downloads) : 3745  
No of Journals: 115







# DEPARTMENT-WISE EXPENDITURE (IN RS.) (2023-2024)

BIOTECH

Total Amount in Rs: NA  
No of books added: NA

CHEMISTRY

Total Amount in Rs: NA  
No of books added: NA

CIVIL

Total Amount in Rs: NA  
No of books added: NA

CSE

Total Amount in Rs: NA  
No of books added: NA

DESIGN

Total Amount in Rs: NA  
No of books added: NA

DSM

Total Amount in Rs: NA  
No of books added: NA

ECE

Total Amount in Rs: NA  
No of books added: NA

ELECTRICAL

Total Amount in Rs: 46207  
No of books added: 06

# DEPARTMENT-WISE EXPENDITURE (IN RS.) (2023-2024)

ENVT

Total Amount in Rs: NA  
No of books added: NA

HUMANITIES

Total Amount in Rs: NA  
No of books added: NA

IT

Total Amount in Rs: NA  
No of books added: NA

MATHS

Total Amount in Rs: NA  
No of books added: NA

MECHANICAL

Total Amount in Rs: NA  
No of books added: NA

PHYSICS

Total Amount in Rs: NA  
No of books added: NA

MISC

Total Amount in Rs: NA  
No of books added: NA

SOFTWARE

Total Amount in Rs: NA  
No of books added: NA

# NEW VALUE-ADDED SERVICE

## Web of Science

The e-Shodh Sindhu has started access to Web of Science to DTU. Web of Science is an online subscription-based scientific citation indexing service originally produced by the Institute for Scientific Information, now maintained by Clarivate Analytics that provides a comprehensive citation search

---

1

## DELNET

DELNET has been established promotes resource sharing among the libraries through the development of a network of libraries. It aims to collect, store, and disseminate information besides offering computerized services to users, to coordinate efforts for suitable collection development and also to reduce unnecessary duplication wherever possible.

---

2

## DIGITAL LIBRARY OF INDIA

Ministry of Human Resource Development (MHRD) under its National Mission on Education through Information and Communication Technology (NMEICT) has initiated the National Digital Library of India (NDL India) pilot project to develop a framework of virtual repository of learning resources with a single-window search facility. Filtered and federated searching is employed to facilitate focused searching so that learners can find out the right resource with least effort and in minimum time.

---

3

## IRINS

IRINS is web-based Research Information Management (RIM) service developed by the Information and Library Network (INFLIBNET) Centre in collaboration with the Central University of Punjab. The portal facilitates the academic, R&D organisations and faculty members, scientists to collect, curate and showcase the scholarly communication activities and provide an opportunity to create the scholarly network.

---

4

## VRD

The Central Library has good reference collection and provides reference service to the members. Library will answer brief reference questions for patrons via email. This service is intended for brief questions and requests for more complex reference questions cannot be replied.

---

5

## Grammarly

A newly subscribed Grammarly is a cloud-based typing assistant. It reviews spelling, grammar, punctuation, clarity, engagement, and delivery mistakes in English texts, detects plagiarism

6



and suggests replacements for the identified errors. It also allows users to customize their style, tone, and context-specific language. Grammarly is available as a standalone application for use with desktop programs, a browser extension optimized for Google Docs, and a smartphone keyboard.

---

## **Wiley 908 journals**

The Library has newly subscribed to Wiley 908 journals from January 2024.

---

7

## **Harvard Business Publishing**

Library has started to serve our students with Harvard Business Publishing cases.

---

8

## **Rare Book Collection**

The library has lots of rare books for which a separate collection has been made.

---

9

## **DTU Publication Archive**

The library has also created an archive for publications published by faculty and research scholars of DTU

---

10

## **Federated search – J-Gate**

To facilitate the library users, the library has access to J-GATE, a federated search engine. It serves as a single gateway for e-journals.

---

11

## **Manuscript**

Digital Manuscript from Indira Gandhi National Centre for the Arts and Oriental Institute: The Maharaja Sayajirao University of Baroda has been purchased by the library.

---

12

## **Section on Vivekananda books**

The library has developed a separate section of a collection of books on Vivekananda.

---

13

## **Library Membership to Family Members**

Any member of the faculty and staff (above 18 years) can become a library member

---

14

## **RemoteXs:**

To provide remote access to electronic resources the Library has started the subscription to RemoteXs. It is a one stop solution to provide users a single window access to their digital resources.

---

15

## **Economic & Political Weekly**

The Economic and Political Weekly is a weekly peer-reviewed academic journal covering all social sciences and is published by the Sameeksha Trust

---

16

# LIBRARY POLICIES & SERVICES

01.

## PLAGIARISM CHECK:

Turnitin

02.

## ACCESS TO OTHER NETWORK:

1. DELNET 2. eShodhSindhu (INFLIBNET)

03.

## INFORMATION MANAGEMENT SOFTWARE

1.KOHA for Library 2.DSPACE for Institutional Repository

04.

## OVERDUE CHARGES (FINE):

Members are required to return all borrowed books on or before the due date. In case of late return, an overdue fine of ₹1.00 per volume per day will be charged for each book returned after the due date.

05.

## LIBRARY TIMING:

The library remains open from Monday to Friday between 9.00 a.m. and 10.00 p.m., on Saturday from 9.30 a.m. to 10.00 p.m., and on Sunday from 10.00 a.m. to 5.00 p.m

06.

## LIBRARY TIMING DURING EXAMS:

During examination periods, the library remains open from Monday to Friday between 9.00 a.m. and 6.00 a.m. the following day, on Saturday from 9.30 a.m. to 6.00 a.m. the following day, and on Sunday from 10.00 a.m. to 5.00 p.m..

01.

## OVERDUE CHARGES (FINE):

Members are expected to return all borrowed books on or before the due date. In the event of late return, an overdue charge of ₹1.00 per volume per day will be levied for each book returned after the due date.

# SERVICES



```
graph TD; S1[1. Similarity check through Turnitin<br/>2. Assistance in the use of Electronic Resources] --- S2[3. Circulation<br/>4. Reference<br/>5. Audio-Visual<br/>6. E-Journals<br/>7. Library Membership Facility]; S2 --- S3[8. Document Borrowing Facility<br/>9. Text book Service<br/>10. Reservation of books<br/>11. Inter-Library Loan Service]; S3 --- S4[12. Reference, Referral and Information Service, and E-referencing<br/>13. Facility to browse reading materials in open access environment]; S5[14. Use of special collections wherever they are available<br/>15. Use of Theses and Dissertation as per the conditions] --- S6[1. Facility to research scholars<br/>17. Bibliographical Services wherever they are available]; S6 --- S7[18. Photocopying Service by adhering to the Copyright Provisions is available through the commercial vendors]; S7 --- S8[19. Computer Print-out facility<br/>20. Facility of browsing Internet<br/>21. Facility of browsing CD ROM etc];
```

**1. Similarity check through Turnitin**

**2. Assistance in the use of Electronic Resources**

**3. Circulation**

**4. Reference**

**5. Audio-Visual**

**6. E-Journals**

**7. Library Membership Facility**

**8. Document Borrowing Facility**

**9. Text book Service**

**10. Reservation of books**

**11. Inter-Library Loan Service**

**12. Reference, Referral and Information Service, and E-referencing**

**13. Facility to browse reading materials in open access environment**

**14. Use of special collections wherever they are available**

**15. Use of Theses and Dissertation as per the conditions**

**1. Facility to research scholars**

**17. Bibliographical Services wherever they are available**

**18. Photocopying Service by adhering to the Copyright Provisions is available through the commercial vendors**

**19. Computer Print-out facility**

**20. Facility of browsing Internet**

**21. Facility of browsing CD ROM etc**

# SERVICES

**22. Facility of browsing Manuscripts**  
**23. Facility of browsing Rare Books collection**

**31. Individual attention and help to the users to locate their reading material**  
**32. Display of Publications of Faculty Members**

**24. Facility of browsing DTU publications**  
**25. Library at a glance**  
**26. Article index of selected periodicals**

**33. Exhibition of books**  
**34. Newsletter**  
**35. Online catalogue**

**27. Weekly display of new arrivals.**  
**28. Library orientation to fresh members**

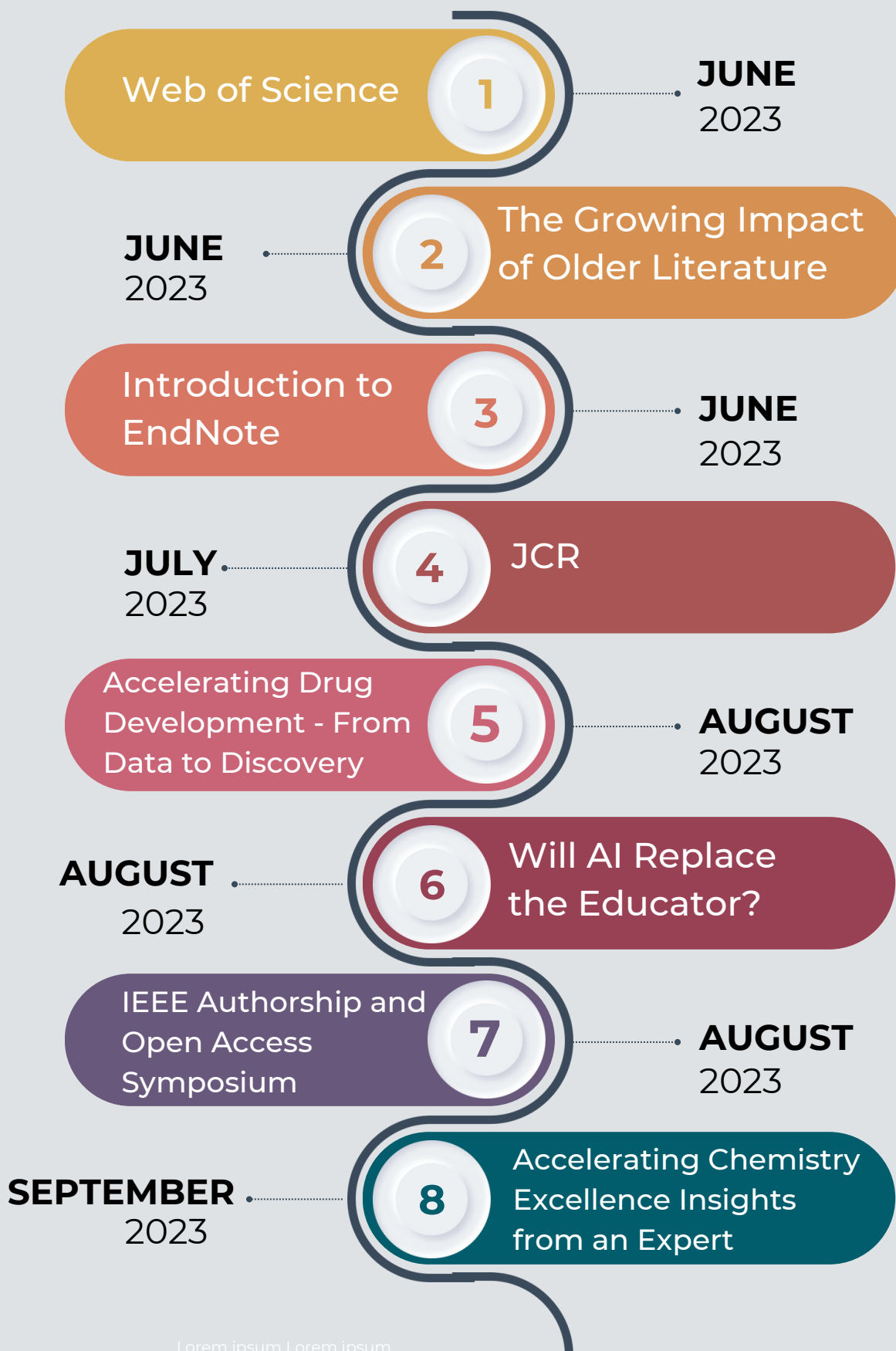
**36. Current Awareness**  
**a. Monthly Acquisition Bulletin**  
**b. Newspaper Clipping**  
**c. Today in history**

**29. Supply of handout to guide the users for the use of library**  
**30. Email service for messaging to members**

**36. Current Awareness**  
**d. Monthly Intellectual Contribution (Scholarly) of DTU**



# INFORMATION LITERACY WORKSHOPS



# INFORMATION LITERACY WORKSHOPS

Visit of Eshan College  
of Engineering Agra  
students

9

**SEPTEMBER**  
2023

**25 - 29 SEPTEMBER**  
2023

10

E-Resources A  
Gateway for Research,  
7th edi

DrillBit (online)

11

**FEBURARY**  
2024

**MARCH**  
2024

12

IEEE Author

Turnitin Instructor  
training

13

**MARCH**  
2024

**APRIL**  
2024

14

QuillBot