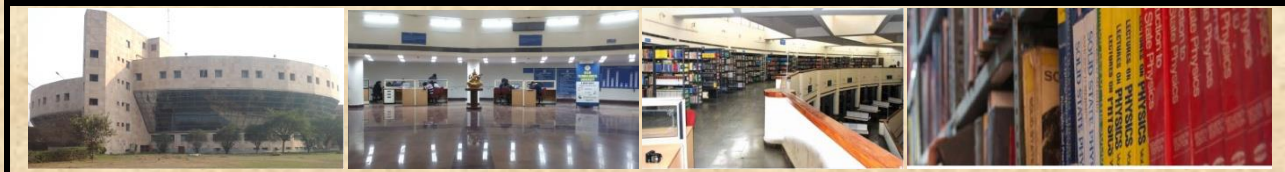


Central Library

DELHI TECHNOLOGICAL UNIVERSITY



May, 2022



New Arrivals

Prepared by:-
Dr. (Mrs.) Lalita
Assistant Librarian

S. No	Title	Author	Class No.	Publisher
1	TECHNICAL COMMUNICATION : PRINCIPLES AND PRACTICE	RAMAN, MEENAKSHI	004	OUP
2	MICROPROCESSOR ARCHITECTURE, PROGRAMMING, AND APPLICATIONS WITH THE 8085	GAONKAR, RAMESH	004.165	PENRAM
3	OBJECT ORIENTED PROGRAMMING WITH C++	BALAGURUSAMY, E	005.117	MCGRAW
4	LET US C	KANETKAR, YASHAVANT	005.133	BPB
5	LET US C SOLUTIONS	KANETKAR'S, YASHAVANT	005.133	BPB
6	OPERATING SYSTEM CONCEPTS	SILBERSCHATZ, ABRAHAM	005.43	JOHN WILEY
7	PROFESSIONAL ETHICS : INCLUDES HUMAN VALUES	SUBRAMANIAN, R.	303.372	OUP
8	ECONOMICS FOR ENGINEERING STUDENTS	SINGH, SEEMA	330.02462	I.K
9	ESSENTIALS OF ENVIRONMENTAL STUDIES	MISHRA, S.P.	333.707 MIS	ANEBOOK
10	PROFICIENCY IN READING COMPREHENSION	SINGH, AJAY	372.41	ARIHANT
11	30 DAYS TO A MORE POWERFUL VOCABULARY	FUNK, WILFRED	428.1	GOYAL
12	WORD POWER MADE EASY	LEWIS, NORMAN	428.81	GOYAL
13	NUMERICAL METHODS : FOR SCIENTIFIC AND ENGINEERING COMPUTATION	JAIN, M K	519.4	NEW AGE
14	LINEAR PROGRAMMING	GUPTA, R.K.	519.92	KRISHNA
15	SURVEYING-III HIGHER SURVEYING	PUNMIA, B.C	526.982	LAXMI
16	FUNDAMENTALS OF PHYSICS	YAVORSKY, B.M.	530	MIR
17	TEXTBOOK OF APPLIED PHYSICS	JHA, A.K.	530	I.K
18	TEXTBOOK OF APPLIED PHYSICS	JHA, A.K.	530	I.K
19	ENGINEERING AND GENERAL GEOLOGY	SINGH, PARBIN	551	S.K. KATARIA
20	ENGINEERING GRAPHICS WITH AUTOCAD	KUMAR, NAVEEN	604.20285	GALGOTIA
21	ESSENTIAL MATLAB FOR ENGINEERS AND SCIENTISTS	HAHN, BRIAN H.	620.00285	ACADEMIC
22	NON-CONVENTIONAL ENERGY RESOURCES	KHAN, B H	621.042	MCGRAW
23	RENEWABLE ENERGY SOURCES AND EMERGING TECHNOLOGIES	KOTHARI, D.P.	621.042	PHI
24	FUNDAMENTALS OF ELECTRICAL ENGINEERING	SEKSENA, S.B. LAL	621.3	CAMBRIDGE
25	ELECTRICAL POWER SYSTEMS	WADHWA, C L	621.31	NEW AGE
26	ELECTRIC MACHINERY	FITZGERALD, A.E.	621.31042	MCGRAW

27	FUNDAMENTALS OF ELECTRICAL DRIVES	DUBEY, GOPAL K.	621.31042	NAROSA
28	SPICE FOR POWER ELECTRONICS AND ELECTRIC POWER	RASHID, MUHAMMAD H.	621.31702	CRC PRESS
29	POWER SYSTEM ENGINEERING	KOTHARI, D P	621.3191	MCGRAW
30	FOUNDATION OF DIGITAL ELECTRONICS AND LOGIC DESIGN	SINGH, A.K.	621.3815	NEW AGE
31	LINEAR INTEGRATED CIRCUITS	CHOUDHURY, D ROY	621.3815	NEW AGE
32	OP-AMPS AND LINEAR INTEGRATED CIRCUITS	GAYAKWAD, RAMAKANT A.	621.3815	PEARSON
33	FUNDAMENTALS OF NETWORK ANALYSIS AND SYNTHESIS	SONI, K.M.	621.38153	S.K. KATARIA
34	DIGITAL LOGIC AND COMPUTER DESIGN	MANO, M. MORRIS	621.381952	PEARSON
35	NETWORK ANALYSIS AND SYNTHESIS	KUO, FRANKLIN F	621.3851	WILEY
36	CONTROL SYSTEM	NAVANI, J.P.	629.8	S. CHAND
37	CONTROL SYSTEMS (WITH MATLAB PROGRAMS)	SINGH, SONVEER	629.8	KHANNA
38	PRINCIPLES AND PRACTICE OF SOIL SCIENCE : THE SOIL AS A NATURAL RESOURCE	WHITE, ROBERT E.	631.4	WILEY
39	DESIGNING AND MANAGING THE SUPPLY CHAIN : CONCEPTS, STRATEGIES AND CASE STUDIES	SIMCHI-LEVI, DAVID	658.5	MCGRAW
40	INTRODUCTION TO PROCESS CALCULATIONS STOICHIOMETRY	GAVHANE, K.A	660.70285	NIRALI
