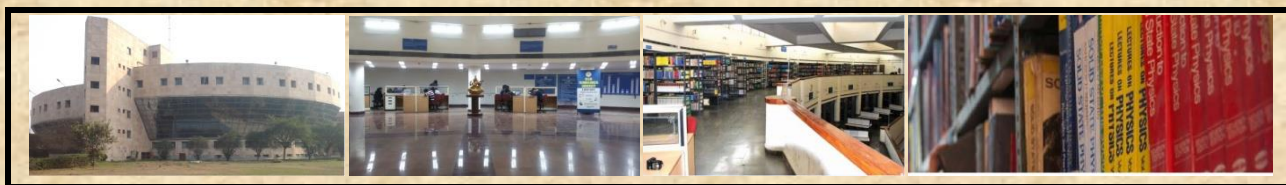


Central Library

DELHI TECHNOLOGICAL UNIVERSITY



February, 2021



New Arrivals

Prepared by:-
Dr. (Mrs.) Lalita
Assistant Librarian

S. No	Title	Author	Class No.
1	INTRODUCTION TO OPERATIONS RESEARCH	HILLIER, FREDERICK S.	001.424
2	DATA COMMUNICATIONS AND NETWORKING	FOROUZAN, BEHROUZ A	004.6
3	C PROGRAMMING LANGUAGE	KERNIGHAN, BRIAN W.	005.133
4	OBJECT ORIENTED PROGRAMMING WITH C++	BALAGURUSAMY, E	005.133
5	PYTHON PROGRAMMING IN CONTEXT	MILLER N. BRADLEY	005.133
6	HANDBOOK OF BIG DATA AND IOT SECURITY	DEGHANTANHA, ALI	005.7
7	INTRODUCTION TO DATABASE SYSTEMS	DATE, C.J.	005.74
8	HEALTH RELATED DEMOGRAPHY IN AHMEDABAD DISTRICT-GUJARAT	CCRAS	305.800
9	MONETARY THEORY AND PUBLIC POLICY	KURIHARA K KENNETH	332.401
10	HANDBOOK OF RESEARCH ON FAMILY BUSINESS, SECOND EDITION	SMYRNIOS X. KOSMAS	338.6
11	TEXTBOOK OF DISCRETE MATHEMATICS	SARKAR, SWAPAN KUMAR	511.1
12	APPROXIMATION AND OPTIMIZATION : ALGORITHMS, COMPLEXITY AND APPLICATIONS	DEMETRIOU, IOANNIS C.	511.4
13	GREEN'S FUNCTIONS AND BOUNDARY VALUE PROBLEMS	STAKGOLD, IVAR	515.35
14	ALGORITHMS DESIGN AND ANALYSIS	AGARWAL, UDIT	518.1
15	AYURVEDA INTERVENTION (AYUSH QOL-2C) IN IMPROVING QUALITY OF LIFE IN LOCAL NON METASTATIC BREAST CANCER AS ADJUVANT TO RADIOTHERAPY AND CHEMOTHERAPY	CCRAS	610
16	GLIMPSES OF CCRAS CONTRIBUTIONS (50 GLORIOUS YEARS) : PHARMACOLOGY RESEARCH AND SAFETY STUDIES	CCRAS	610
17	TRAINING MODULES FOR GERIATRIC HEALTH CARE	CCRAS	610
18	CLINICAL RESEARCH PROTOCOLS FOR TRADITIONAL HEALTH SCIENCES : (AYURVEDA, SIDDHA, UNANI, SOWA RIGPA AND OTHERS)	CCRAS	610.72
19	REFERENCE MANUAL ON ORAL HEALTH FOR ALLOPATHIC AND AYUSH PRACTITIONERS	CCRAS	614.5
20	PARMAN AADHARHIT AYURVEDIC CHIKITSHA UPKARAM	CCRAS	615
21	SELECT RESEARCH PAPERS ON AYURVEDA AND SIDDHA CERIATRICS	CCRAS	615

22	SEMINAR ON LETERARY RESEARCH 22-24 FEBRUARY, 1999 PROCEEDINGS	CCRAS	615
23	COMPENDIUM OF DRUG REGISTRATION FORMATS OF SELECTED COUNTRIES	CCRAS	615.19
24	CLINICAL SAFETY OF SELECTED AYURVEDIC FORMULATIONS AND PANCHAKARMA PROCEDURES	CCRAS	615.318
25	A B C PICTORIAL GUIDE OF MEDICINAL PLANTS : KNOW YOUR ALPHABETS IN VIEW OF AYURVEDA	CCRAS	615.32
26	EVIDENCE BASED AYURVEDIC PRACTICE : BASED ON CCRAS R & D CONTRIBUTIONS	CCRAS	615.358
27	GLIMPSES OF CCRAS CONTRIBUTIONS (50 GLORIOUS YEARS) : RESEARCH PUBLICATIONS	CCRAS	615.358
28	NTEGRATION OF AYUSH (AYURVEDA) WITH NATIONAL PROGRAM FOR PREVENTION AND CONTROL OF CANCER, DIABETES, CARDIOVASCULAR DISEASES AND STROKE (NPCDCS)	CCRAS	615.358
29	TEACHING AND TRAINING MODULES FOR SURGEON'S TRAINING PROGRAMME ON KSHARSUTRA THERAPY	CCRAS	615.358
30	SELECT RESEARCH PAPERS ON SAFETY AND EFFICACY OF PANCHAKARMA	CCRAS	615.5
31	AYURVEDA : A FOCUS ON RESEARCH AND DEVELOPMENT	CCRAS	615.538
32	NATIONAL CAMPAIGN ON ROLE OF KSHARASUTRA (A MINIMAL INVASIVE AYURVEDIC PARA-SURGICAL MEASURE) IN ANO- RECTAL DISORDERS : PROCEEDINGS OF NATIONAL WORKSHOP ON KSHARASUTRA	CCRAS	615.538
33	REDEDICATING THREE ANCIENT HEALTHCARE TRADITIONS TO HUMANITY	CCRAS	615.538
34	SELECT RESEARCH PAPERS ON KSHARASUTRA (A MINIMAL INVASIVE AYURVEDIC PARA-SURGICAL MEASURE)	CCRAS	616.3506
35	SELECT RESEARCH PAPERS ON RHEUMATOID ARTHRITIS (AMAVATA)	CCRAS	616.7227
36	HIGH PERFORMANCE SELF-CONSOLIDATING CEMENTITIOUS COMPOSITES	KODEBOYINA, GANESH BABU	620.1
37	INTRODUCTION TO REMOTE SENSING	CAMPBELL, JAMES B.	621.3678

38	STRUCTURAL ANALYSIS	AGOR, R.	624.171
39	MANAGEMENT ACCOUNTING	ANANTHANARAYANAN, P.S.	657.42
40	MANAGEMENT ACCOUNTING	SEKHAR, R.C.	658.1511
41	STRATEGIC HUMEN RESOURCE MANAGEMENT	BAILEY CATHERINE	658.3
42	DIGITAL HR STRATEGY	SEN SOUMYASANTO	658.30028 5
43	DIGITAL HR STRATEGY	SEN SOUMYASANTO	658.30028 5
44	RESEARCH METHODS IN HUMAN RESOURCE MANAGEMENT	ANDERSON VALERIE	658.30072
45	INTRODUCTION TO PEOPLE ANALYTICS	KHAN NADEEM	658.30072 7
46	ARTIFICIAL INTELLIGENCE FOR LEARNING	CLARK DONALD	658.3124
47	EVIDENCE-INFORMED LEARNING DESIGN	NEELEN MIRJAM	658.31240 4
48	LEARNING ANALYTICS	MATTOX II	658.472
49	MARKETING MANAGEMENT : A CASEBOOK	PRADHAN, DEBASIS	658.8
50	ONLINE CONSUMER BEHAVIOR	CLOSE G. ANGELINE	658.8342
51	ELEMENTARY STRUCTURAL ANALYSIS AND DESIGN OF BUILDINGS : A GUIDE FOR PRACTICING ENGINEERS AND STRUDENTS	PILLA, DOMINICK R.	690.21
52	STRUCTURAL PACKAGING : S14	HONG, KONG	741.6
53	APAAR KHUSHI KA GHARANA	ROY, ARUNDHATI	823.914
