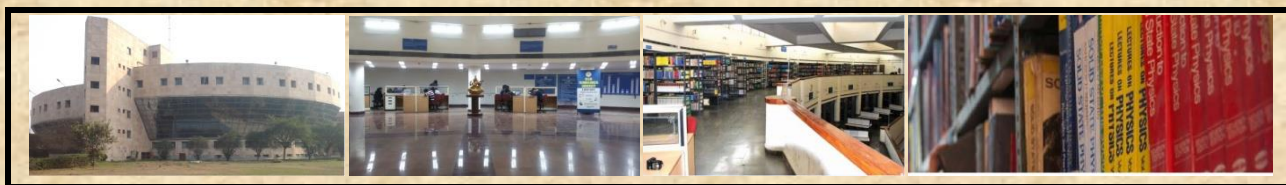


Central Library

DELHI TECHNOLOGICAL UNIVERSITY



September, 2019



New Arrivals

Acc. No.	Title	Author	Class No.
TD-4715	SPEAKER EMOTION RECOGNITION BASED ON SPEECH FEATURES AND CLASSIFICATION TECHNIQUES	BANSAL (HIMANSHU)	004 BAN
TD-4672	EXPLORING EVOLUTIONARY ALGORITHMS INCORPORATING TEACHER STUDENT PREFERNCES FOR UNIVERSITY COURSE SCHEDULING	BHUTANI (APARNA)	004 BHU
TD-4674	TRANSFER LEARNING APPROACH FOR IMAGE CLASSIFICATION USING BINARY IMAGE SEGMENTATION ON LIMITED DATASET	B N DEEPANKAN	004 DEE
TD-4685	DETECTING FAKE NEWS AND FAKE REVIEWS THROUGH LINGUISTIC STYLES	JAIN (CHHAVI)	004 JAI
TD-4678	PLANT DISEASE DETECTION USING IMAGE SEGMENTATION AND CONVOLUTIONAL NEURAL NETWORK	KAUSHIK (RAVI)	004 KAU
TD-4676	PREDICTING SIMILARITY IN SENTENCES THROUGH WORD EMBEDDING	MITTAL (MAYANK KUMAR)	004 MIT
TD-4728	SENTIMENT ANALYSIS ON TWITTER DATA USING MACHINE LEARNING TECHNIQUES	MITTAL (ABHILASH)	004 MIT
TD-4669	ENERGY EFFICIENT ROUTING PROTOCOL AND DATA AGGREGATION IN WIRELESS SENSOR NETWORK	NAGAR (DHEERAJ)	004 NAG
TD-4695	ENHANCEMENT OF ML BASED NETWORK ANOMALY DETECTION SYSTEMS WITH GENERATIVE MODELS	RAJPUT (MADHUR)	004 RAJ
TD-4696	SOFTWARE DEFECT PREDICTION USING ENSEMBLE OF MACHINE LEARNING TECHNIQUES	SAKSHI	004 SAK
TD-4679	GAN BASED OBJECT DETECTION OF NOISY IMAGES	VISALI (JAYANTHI ADILAKSHMI)	004 VIS
D5550	SECOND COMING OF CHRIST : THE RESURRECTION OF THE CHRIST WITHIN	YOGANANDA, SRI SRI PARAMAHANSA	294.54
D5547	YOGI KATHAMRIT	YOGANANDA, PARAMAHANSA	294.543092
D5548	YOGI KATHAMRIT	YOGANANDA, PARAMAHANSA	294.543092

D5557	LAW OF SUCCESS : USING THE POWER OF SPIRIT TO CREATE HEALTH, PROSPERITY, AND HAPPINESS	YOGANANDA, SRI SRI PARAMAHANSA	294.544
D5541	WHERE THERE IS LIGHT : INSIGHT AND INSPIRATION FOR MEETING LIFE'S CHALLENGES	YOGANANDA, SRI SRI PARAMAHANSA	294.5448
D5542	WHERE THERE IS LIGHT : INSIGHT AND INSPIRATION FOR MEETING LIFE'S CHALLENGES - HINDI	YOGANANDA, SRI SRI PARAMAHANSA	294.5448
TD-4681	MATHEMATICAL MODELING IN EPIDEMIOLOGY	ABHISHEK KUMAR	510 ABH
TD-4720	INFORMATION THEORETIC MEASURES BASED ON RECORD STATISTICS	GOEL (RITU)	510 GOE
TD-4659	INCOMPLETE PREFERENCE RELATIONS IN MCDM	SAHU (MAMATA)	510 SAH
D5559	HEAT AND MASS TRANSFER	PAL, AMIT	536.2
TD-4744	REMOVAL OF NICKEL FROM WASTE WATER USING GUAR GUM	ALAM (GAUSH)	547.7 ALA
TD-4722	SYNTHESIS AND STUDY OF PERVAPORATION MEMBRANES DOPED WITH VARIOUS FILLERS AND THEIR APPLICATION IN SEPARATION OF ETHANOL-WATER MIXTURE	CHAUDHARY (ARUN)	547.7 CHA
TD-4731	FEASIBILITY STUDY OF CHEMICAL TREATMENT OF BAGASSE FOR BAGASSE/EPOXY COMPOSITE APPLICATIONS	MAURYA (VIKAS)	547.7 MAU
TD-4730	STUDY OF THE MECHANICAL PROPERTIES OF WALNUT/PISTACHIO SHELLS BASED EPOXY COMPOSITES	PATHAK (VAIBHAV)	547.7 PAT
TD-4694	CONDUCTING PAPER BASED BIOSENSOR FOR GLUCOSE DETECTION	PAUL (GEETU P)	547.7 PAU
TD-4665	UNDERSTANDING THE SHARED MOLECULAR BACKGROUND OF AUTISM SPECTRUM DISORDERS AND MUSIC PERCEPTION	MATHEW (ELIZABETH M.)	572 MAT
TD-4664	SCLERODERMA AND IT'S COMORBIDITIES EXPLORING LINKS BY NETWORK APPROACH	NIRZA (SADIYA)	572 MIR

TD-4660	ELUCIDATION OF POTENTIAL THERAPEUTIC MOLECULES DERIVED FROM MEDICINAL PLANTS FOR ROLE IN CANCER AND INFLAMMATION	VERMA (BHASKAR)	572 VER
TD-4721	EXERGETIC EVALUATION OF REGENERATOR AND REHEATER BASED COMBINED CYCLE GAS POWER PLANT	BHATIA (SAGAR)	621 BHA
TD-4684	WASTE MANAGEMENT STRATEGIES FOR UNIVERSITY CAMPUS: CASE STUDY ON PLANT LEAVES	GOTRA (NEETAL)	621 GOT
TD-4655	MONITOR ARM DESIGN FOR SIEMENS CIOSELECT WITH FD	KUNDNANI (PRASHANT)	621 KUN
TD-4687	COMPARATIVE ANALYSIS OF THERMODYNAMICS PERFORMANCE OF CASCADE REFRIGERATION SYSTEM FOR REFRIGERANT COUPLE R23/R290 AND R23/R600A	SAURABH ANAND	621 SAU
TD-4653	PINCH ANALYSIS AND SOLAR THERMAL HEAT INTEGRATION IN A SUGAR INDUSTRY USING HINT SOFTWARE	SINGH (NIRMAL PRATAP)	621 SIN
TD-4656	VELOCITY ENHANCEMENT OF HYDROKINETIC TURBINE OPERATION IN OPEN CHANNELS USING A MULTI AEROFOIL DIFFUSER	SRIVASTAVA (NISHANT)	621 SRI
TD-4668	DESIGN AND EXPERIMENTAL IMPLEMENTATION OF VARIOUS CONTROLLERS FOR TWIN ROTOR MIMO SYSTEM	AYUSH	621.3 AYU
TD-4735	GRID INTEGRATION OF PV-STATCOM USING FIVE LEVEL MULTILEVEL INVERTER	BHARGAV (ALLU)	621.3 BHA
TD-4667	FTFN BASED FILTERS DESIGNING AND ANALYSIS	HEM PRABHA	621.3 HEM
TD-4725	PREDICTION AND ENHANCEMENT OF VOLTAGE STABILITY OF POWER SYSTEMS	MEENA (MANISH KUMAR)	621.3 MEE
TD-4732	HARDWARE IMPLEMENTATION OF V/f CONTROL OF INDUCTION MOTOR USING HSRPEC	PATRA (ANIMESH KUMAR)	621.3 PAT

TD-4666	SOME INVESTIGATIONS ON THE OPTIMAL ALLOCATION OF DISTRIBUTED GENERATION RESOURCES IN DISTRIBUTION SYSTEMS	QUADRI (IMRAN AHMAD)	621.3 QUA
TD-4693	MODELLING, DESIGN AND ANALYSIS OF LED LIGHTING SYSTEMS FOR APPLICATIONS IN ILLUMINATION CONTROL AND HORTICULTURE	RAHMAN (OBAIDUR)	621.3 RAH
TD-4716	ZONE PROTECTION SYSTEM OF TRANSMISSION LINE BY DISTANCE RELAY	RAKESH KUMAR	621.3 RAK
TD-4683	MODELLING, ANALYSIS AND CONTROL OF NON-ISOLATED MULTI PORT DC-DC BOOST CONVERTER	UPADHYAYA (SHREYANSH)	621.3 UPA
TD-4680	LOW POWER MULTI-VALUED ARITHMETIC LOGICAL UNIT DESIGN USING CNFETS	MAHOR (LOKESH)	621.382 MAH
TD-4670	FACE RECOGNITION USING INFRARED IMAGING	AHLAWAT (VAISHALI)	621.3822 AHL
TD-4654	ULTRASOUND IMAGE SEGMENTATION BY COMBINING REGION AND EDGE-BASED INFORMATION	ANKIT KUMAR	621.3822 ANK
TD-4661	CLASSIFICATION OF EEG SIGNAL USING ENSEMBLE SYNCHRONIZATION VIA WAVELET TRANSFORM	BHABHA (ANSHUL)	621.3822 BHA
TD-4677	COMPARATIVE STUDY OF DIFFERENT TRANSFORMS IN OFDM COMMUNICATION SYSTEM	JAIN (SIDDHANT)	621.3822 JAI
TD-4662	PEDESTRIAN WALKING DIRECTION DETECTION USING HYBRID CNN-SVM MODEL	KATARIA (MEGHA)	621.3822 KAT
TD-4675	DESIGN OF SWASTIKA SHAPED DRA ANTENNA FOR C-BAND APPLICATIONS	KUMAR SHIVAM	621.3822 KUM
TD-4658	IMPROVED LUNG PATTERN CLASSIFICATION FOR INTERSTITIAL LUNG DISEASE USING DEEP LEARNING	PODDAR (KRITI)	621.3822 POD
TD-4686	ASYMMETRIC PLASMONIC NANO-BOWTIES FOR ELECTROMAGNETIC ENHANCEMENT	SAPRA (VAIBHAV)	621.3822 SAP

TD-4663	COGNITIVE ENERGY HARVESTING SYSTEM UNDER FINITE BATTERY CONSTRAINTS	SURI (ASHISH)	621.3822 SUR
TD-4714	INFLUENCE OF CONFINEMENT ON BEARING CAPACITY OF SAND	ANKIT KUMAR	624 ANK
TD-4723	STUDY OF PROPERTIES OF FLY ASH BASED GEOPOLYMER CONCRETE	CHAUDHARY (SHASHANK)	624 CHA
TD-4738	SEISMIC PERFORMANCE OF IRREGULAR BUILDINGS	GUPTA (LAKSHAY)	624 GUP
TD-4657	STUDY OF SOIL STABILIZATION USING WASTE PLASTIC MATERIAL	JINDAL (AWESHESH)	624 JIN
TD-4739	SEISMIC PERFORMANCE OF PLAN IRREGULAR RC-FRAMED BUILDINGS WITH SOFT STOREY	KAILASH PRAKASH	624 KAI
TD-4727	STUDY OF DECENTRALIZED WASTEWATER SYSTEMS IN INDIA	PATHAK (PUNEET)	624 PAT
TD-4673	STUDY ON VARIATION IN HYDRAULIC CONDUCTIVITY OF A SOIL AFTER PASSING WASTE WATER THROUGH IT	SINGH (DUSHYANT)	624 SIN
TD-4737	COST OPTIMIZATION ASPECTS OF RCC BOX GIRDER BRIDGE	SINGLA (MADHAV)	624 SIN
TD-4726	WATER FOOTPRINT ANALYSIS OF DELHI TO UNDERSTAND ITS SUSTAINABILITY	VAIBHAV	624 VAI
TD-4689	STUDY ON DIRECT SHEAR TEST ON SAND WITH THE INCLUSION OF GEOTEXTILE AT DIFFERENT ORIENTATION	GOEL (ANKIT)	624.1 FOE
TD-4690	NUMERICAL MODELLING FOR STRESSES IN RAILWAY SUBGRADE WITH GEOCELL CONFINED BALLAST	NAYYAR (AMNINDER SINGH)	624.1 NAY
TD-4691	ANALYSIS OF CONCENTRIC AND ECCENTRIC BRACED STEEL STRUCTURES	RAZDAN (PRAFUL)	624.1 RAZ
TD-4692	ASSESSMENT OF NUTRIENT LOADING AND WATER QUALITY IN A TROPICAL WETLAND	SHAN (VANDANA)	624.1 SHA
TD-4671	STUDY ON PERCEPTION ON CREDIT CARDS AMONG BANK CUSTOMERS	CHAWLA (DRAVYA)	658 CHA
TD-4741	EFFECT OF SELECTION PROCESS ON LABOUR TURNOVER AND ATTRITION RATE IN SERVICE INDUSTRY	CHOWDHARY (MAMTA)	658 CHO

TD-4742	ONLINE TO OFFLINE E-COMMERCE MARKET	DABAS (SHIVAM)	658 DAB
TD-4740	EFFECT OF BRANDING ON CONSUMER BUYING BEHAVIOR	DAS (KAUSTAV)	658 DAS
TD-4743	ANALYSIS OF RURAL MARKETING IN INDIA	PURI (RAMANDEEP SINGH)	658 PUR
TD-4724	STUDY ON IMPACT OF SOCIAL MEDIA ON CONSUMER BUYING BEHAVIOUR	RAO (PAMUKUNTALA MADHU SUDHAN)	658 RAO
TD-4682	USABILITY OF TRAVEL WEBSITES	SANJAY KUMAR	658 SAN
TD-4736	STUDY OF CONSUMER'S BUYING BEHAVIOUR FOR PRODUCTS WITH CARBON FOOTPRINT LABEL	SINGH (SIDDHARTH)	658 SIN
TD-4719	ONLINE CONSUMER ENGAGEMENT AND PURCHASE INTENTION: STUDY ON INDIAN FMCG SECTOR	TIRUWA (ANURAG)	658 TIR
EC876 A-900A	MARKETING MANAGEMNET	GUPTA PRACHI	658.8
