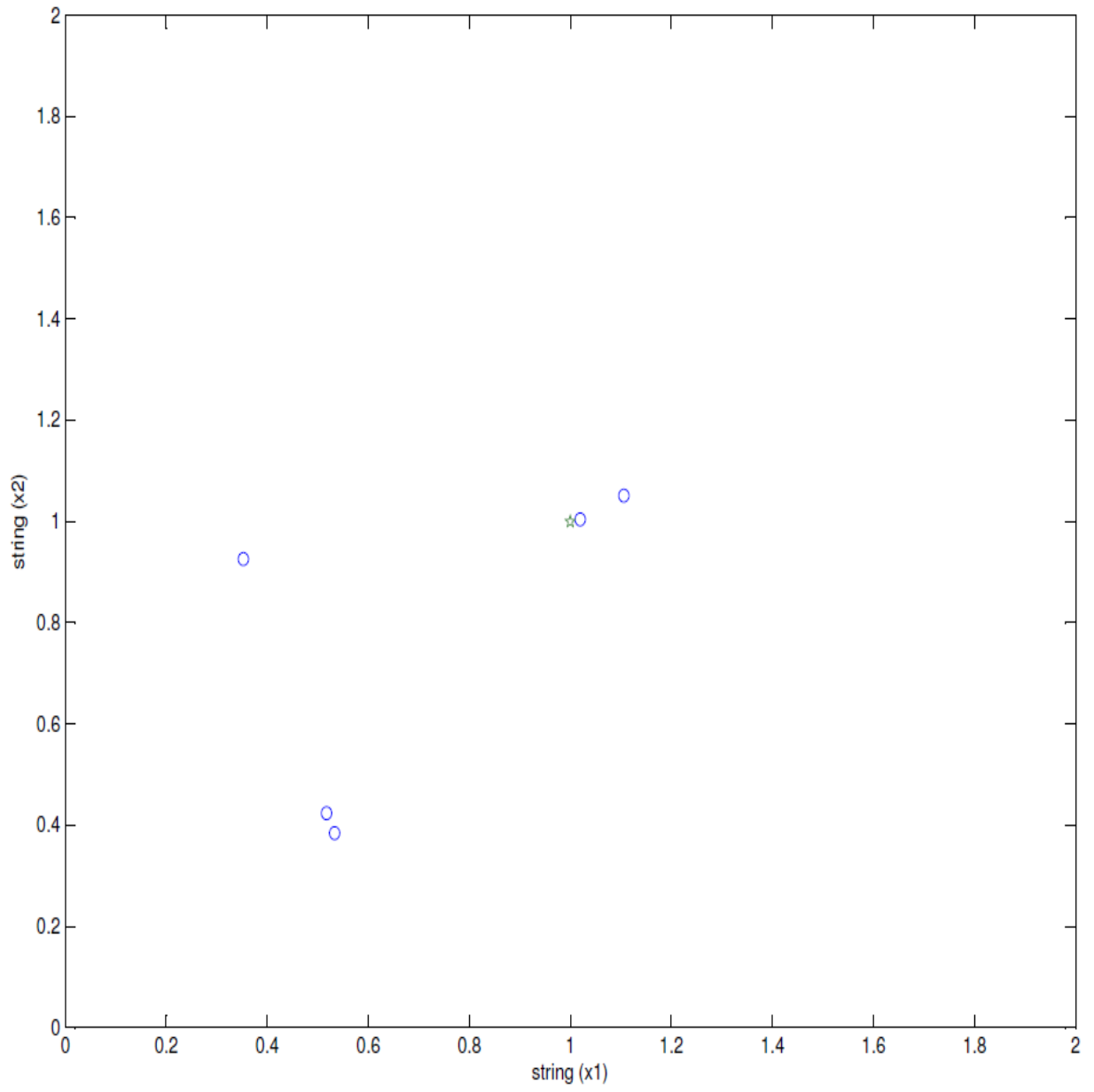
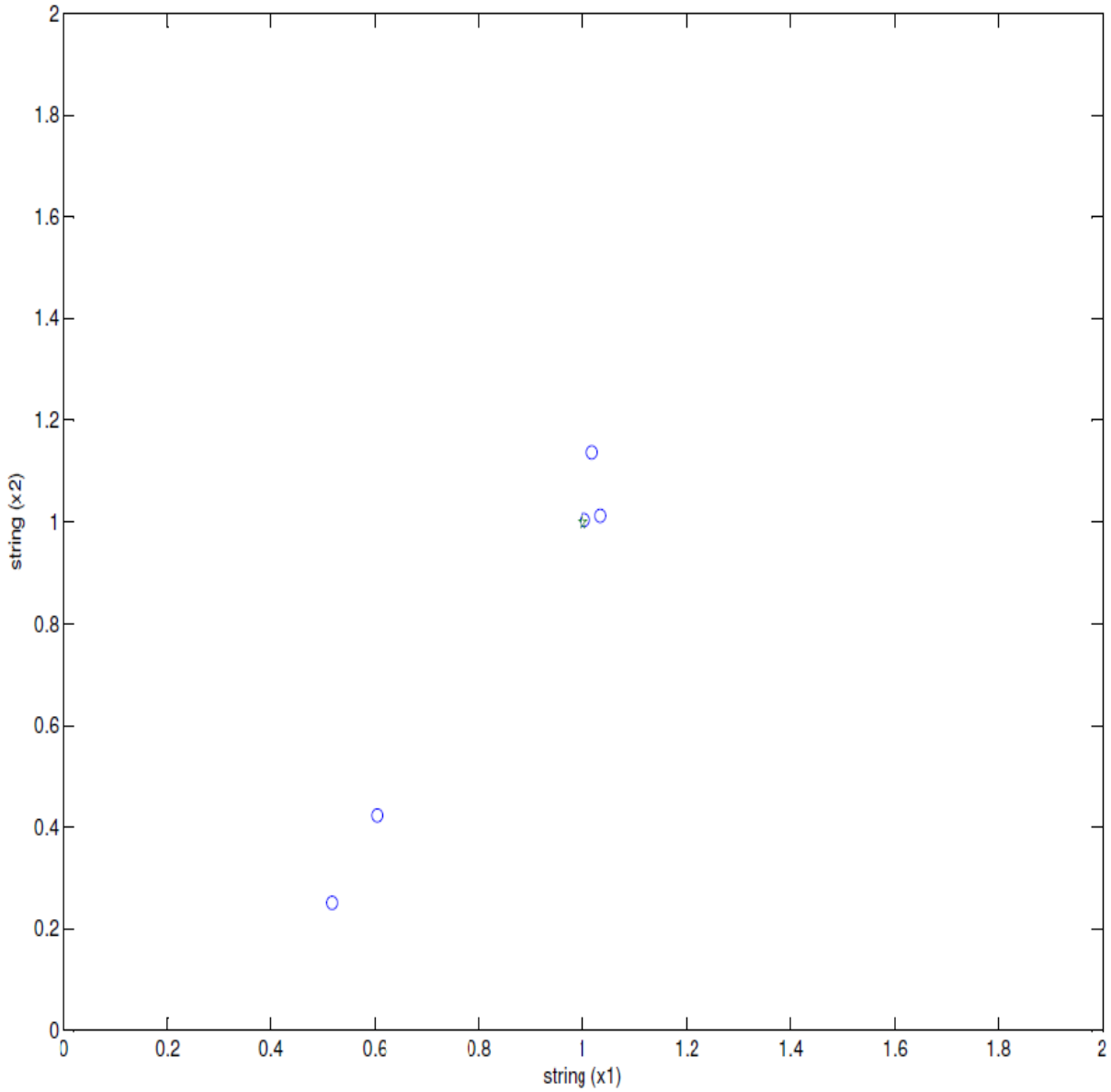


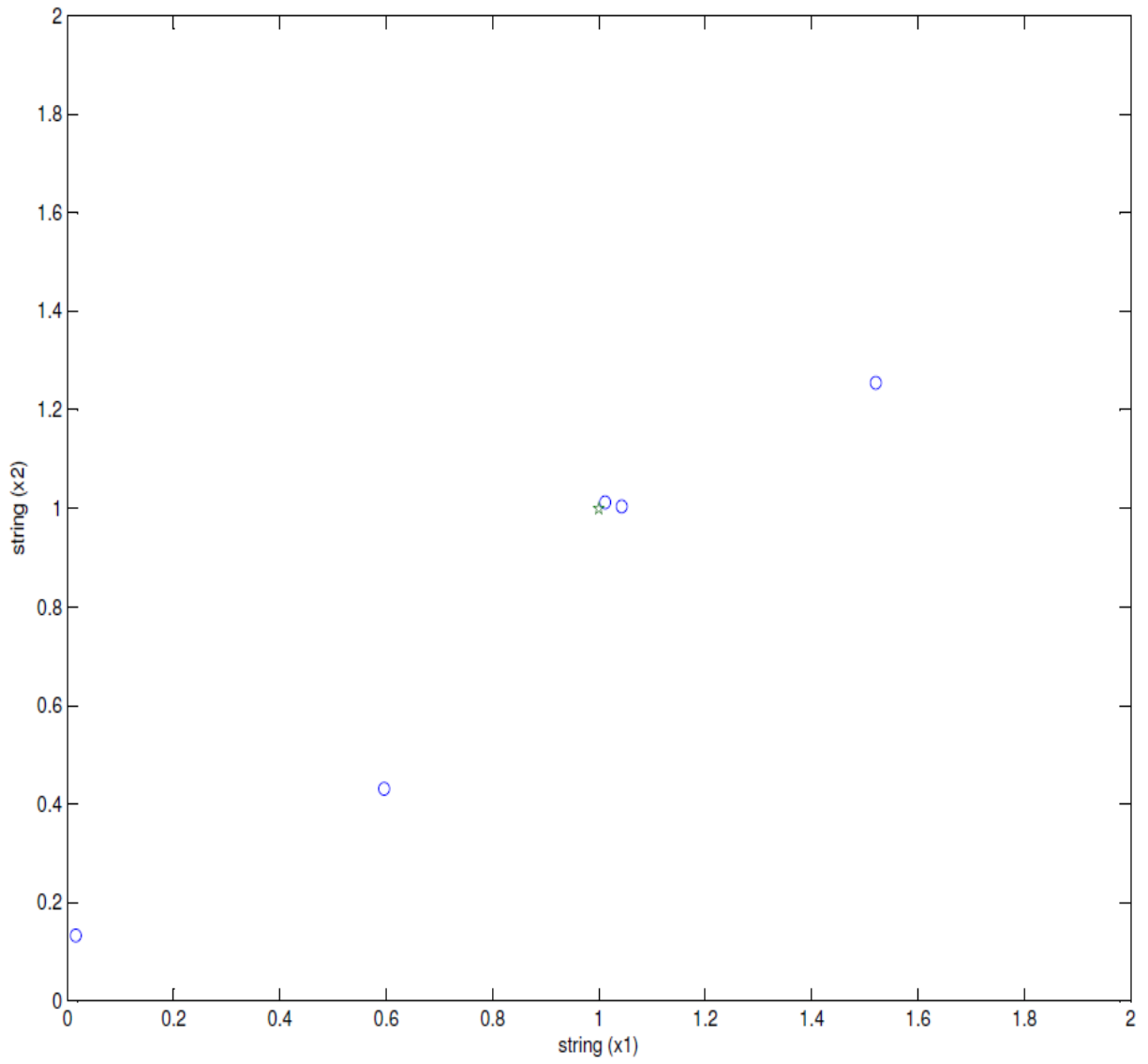
GRAPH-3.1 POINTS OBTAINED AFTER ITERATION 1



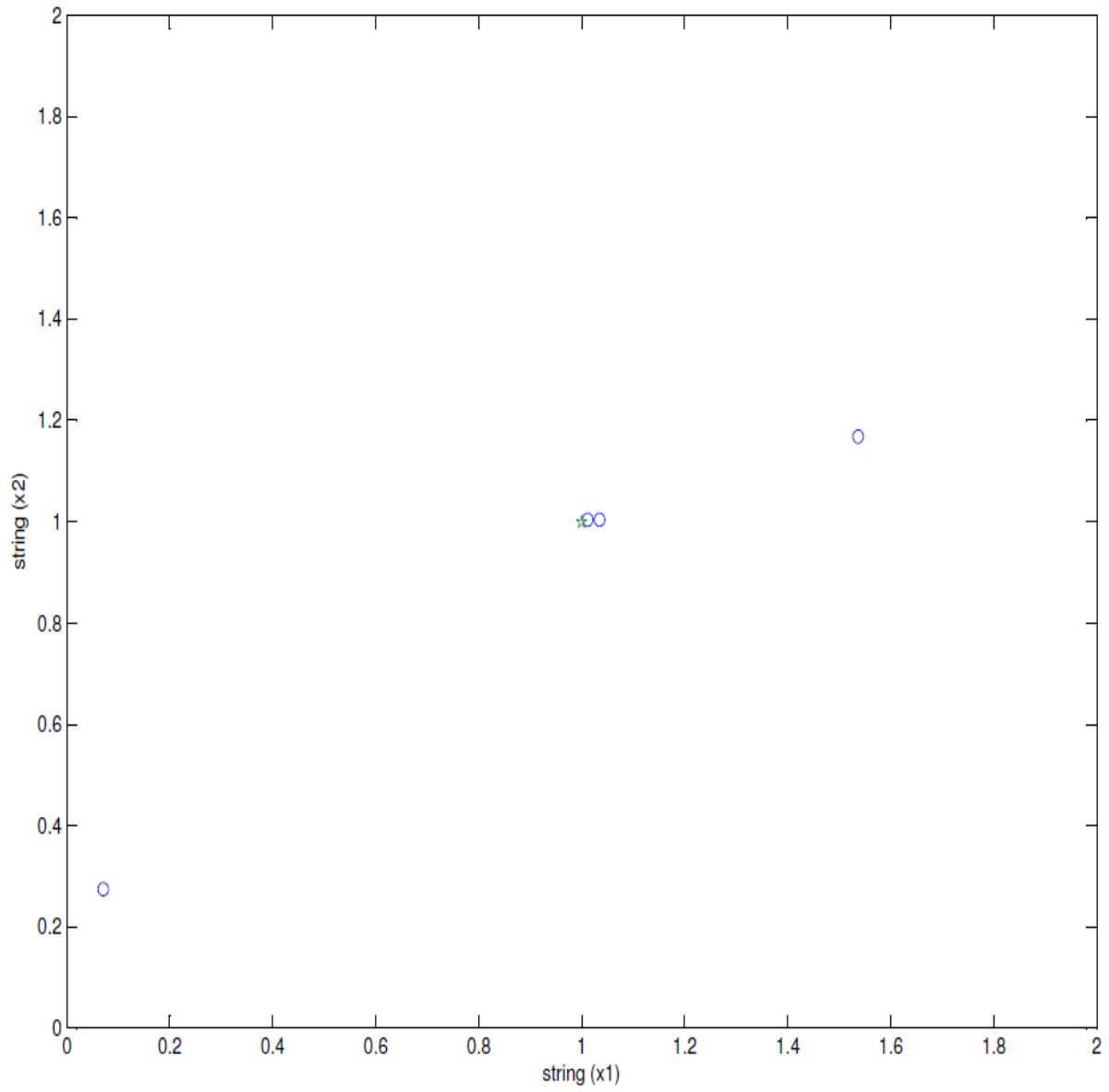
GRAPH-3.2 POINTS OBTAINED AFTER ITERATION 2



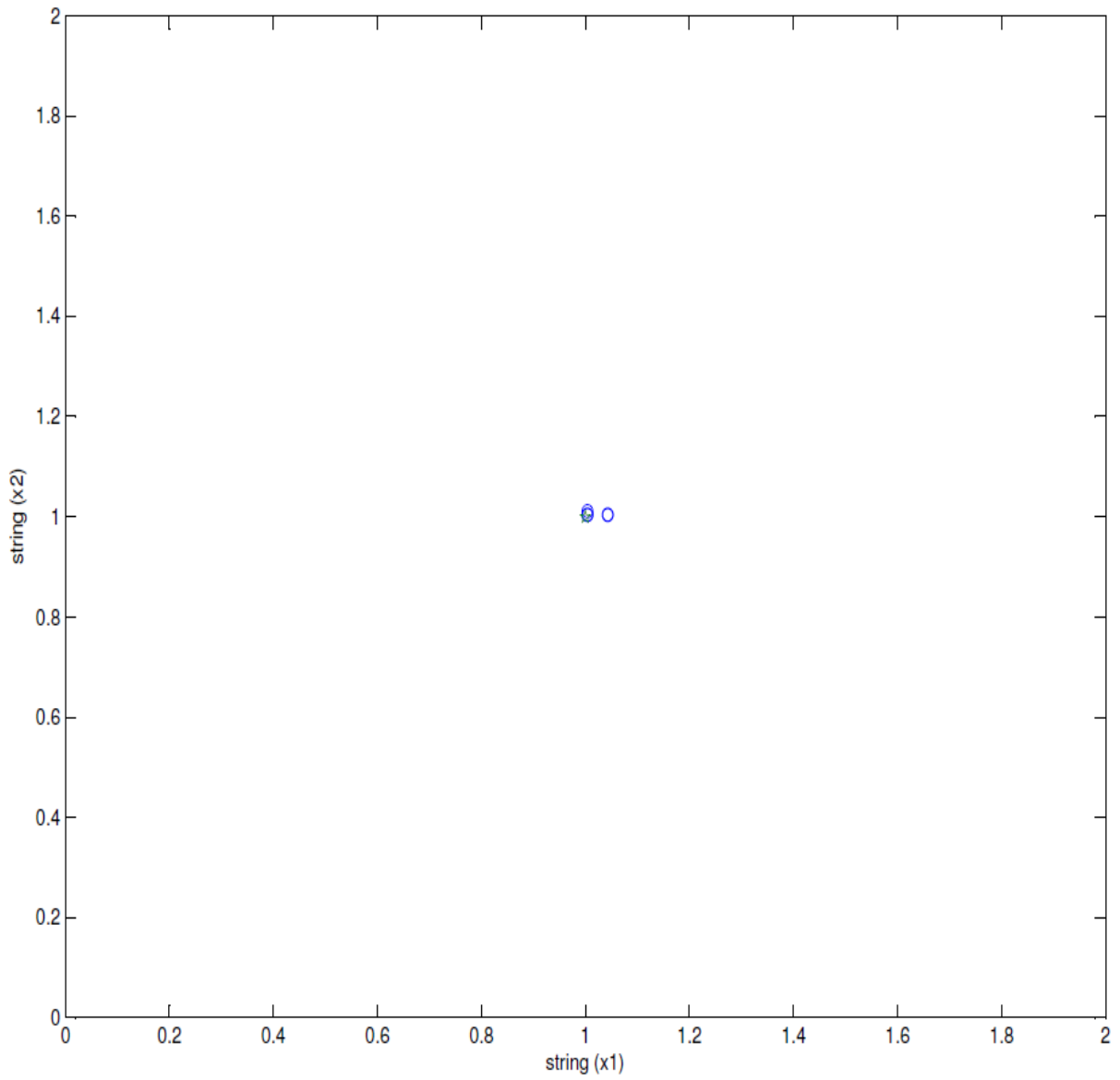
GRAPH-3.3 POINTS OBTAINED AFTER ITERATION 3



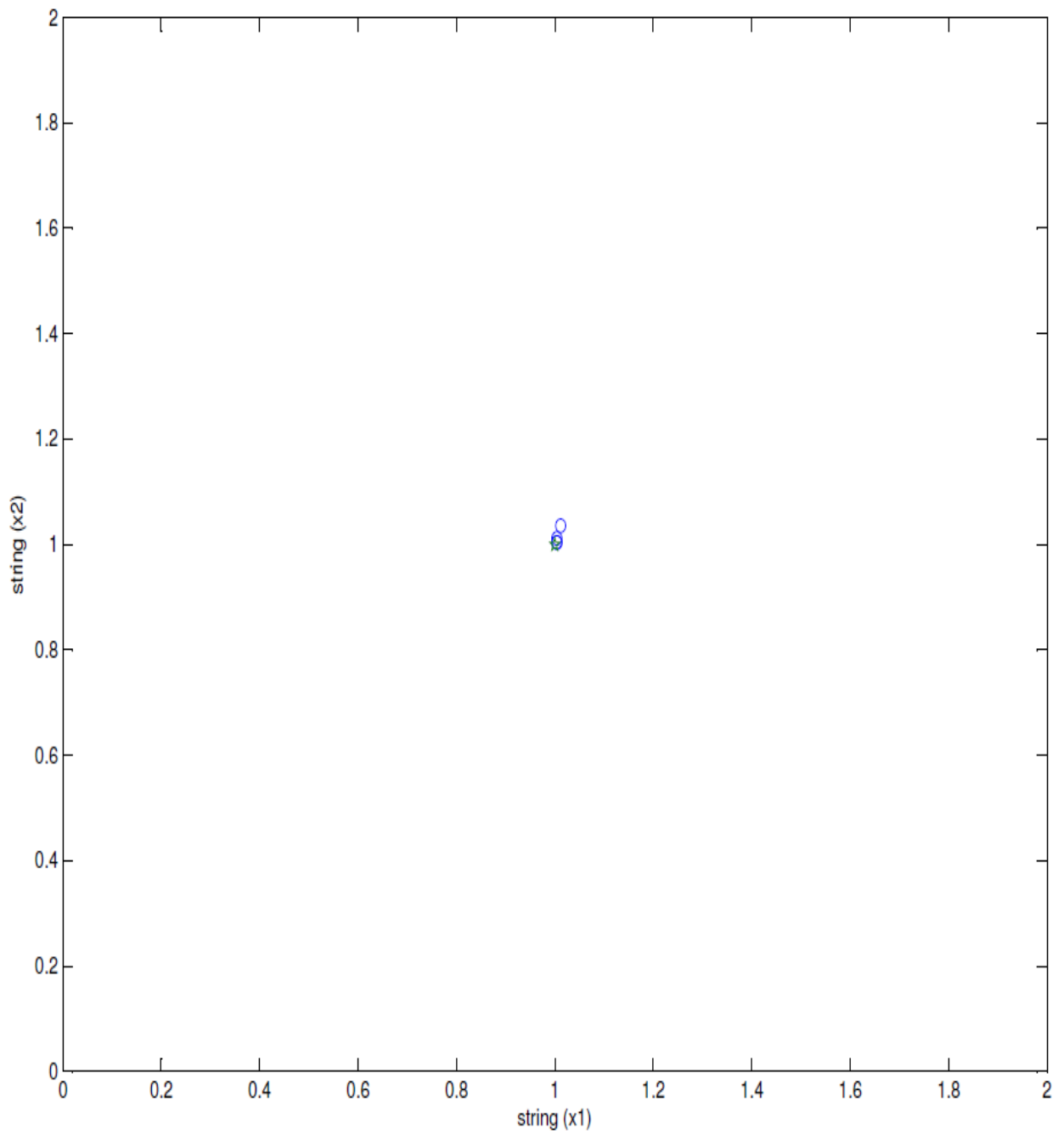
GRAPH-3.4 POINTS OBTAINED AFTER ITERATION 4



GRAPH-3.5 POINTS OBTAINED AFTER ITERATION 5



GRAPH-3.6 POINTS OBTAINED AFTER ITERATION 6



GRAPH-3.7 POINTS OBTAINED AFTER ITERATION 7

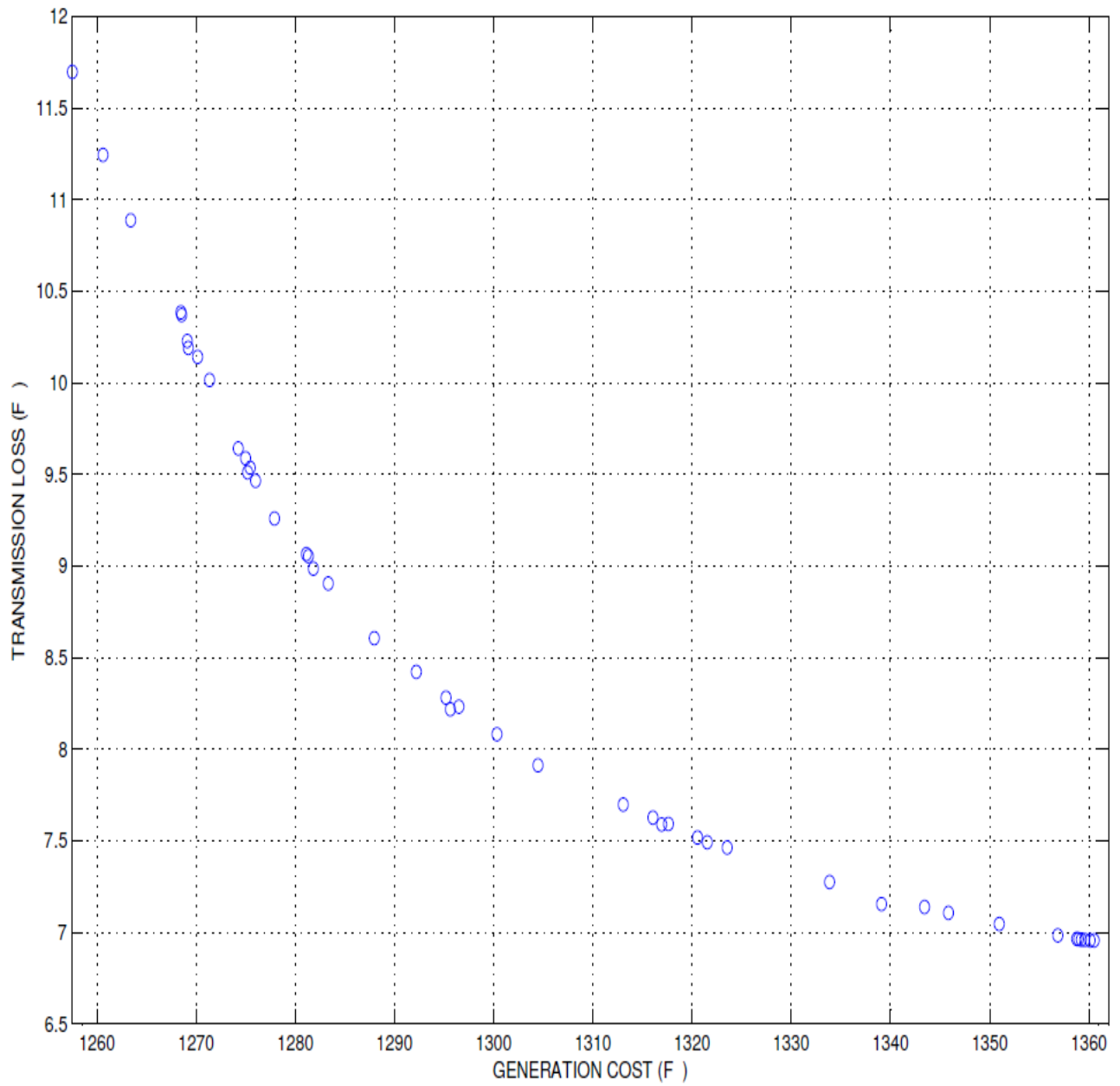


FIG 6.1 2D PLOT FOR F vs F OF IEEE 30 BUS SYSTEM



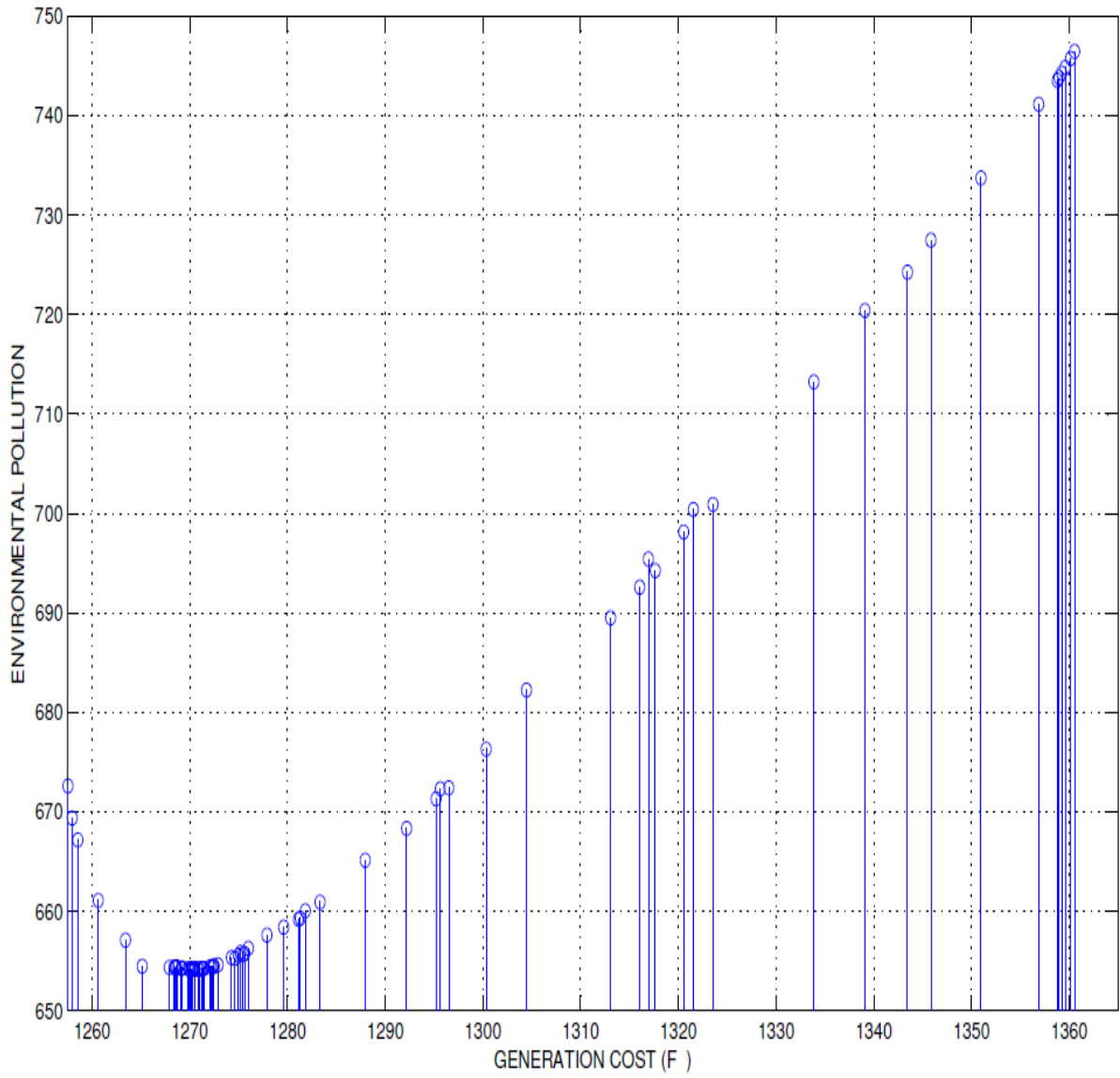


FIG 6.2 2D PLOT FOR F vs F OF IEEE 30 BUS SYSTEM



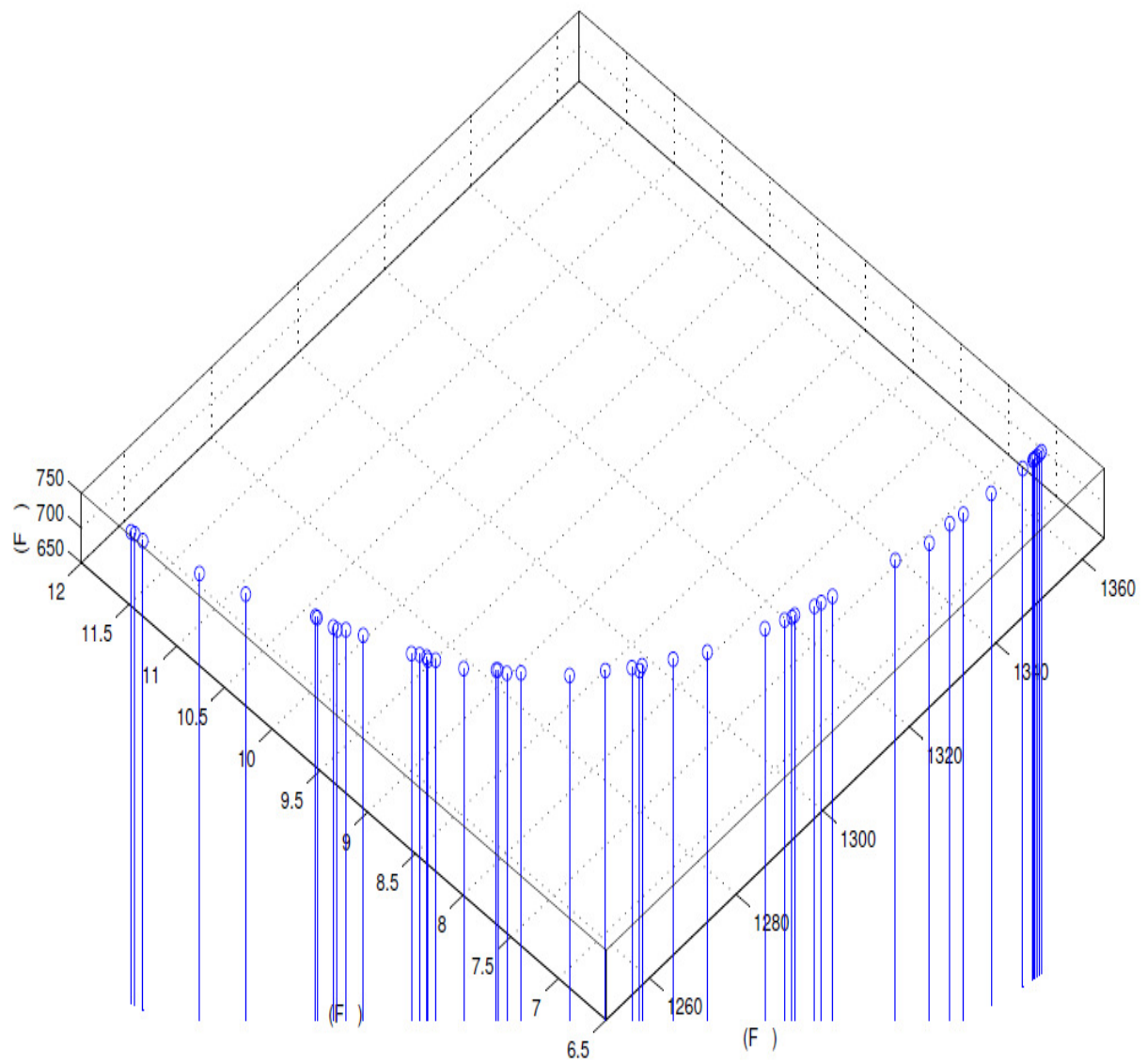


FIG 6.4 NONINFERIOR SET OF IEEE 30 BUS SYSTEM IN 3D SPACE

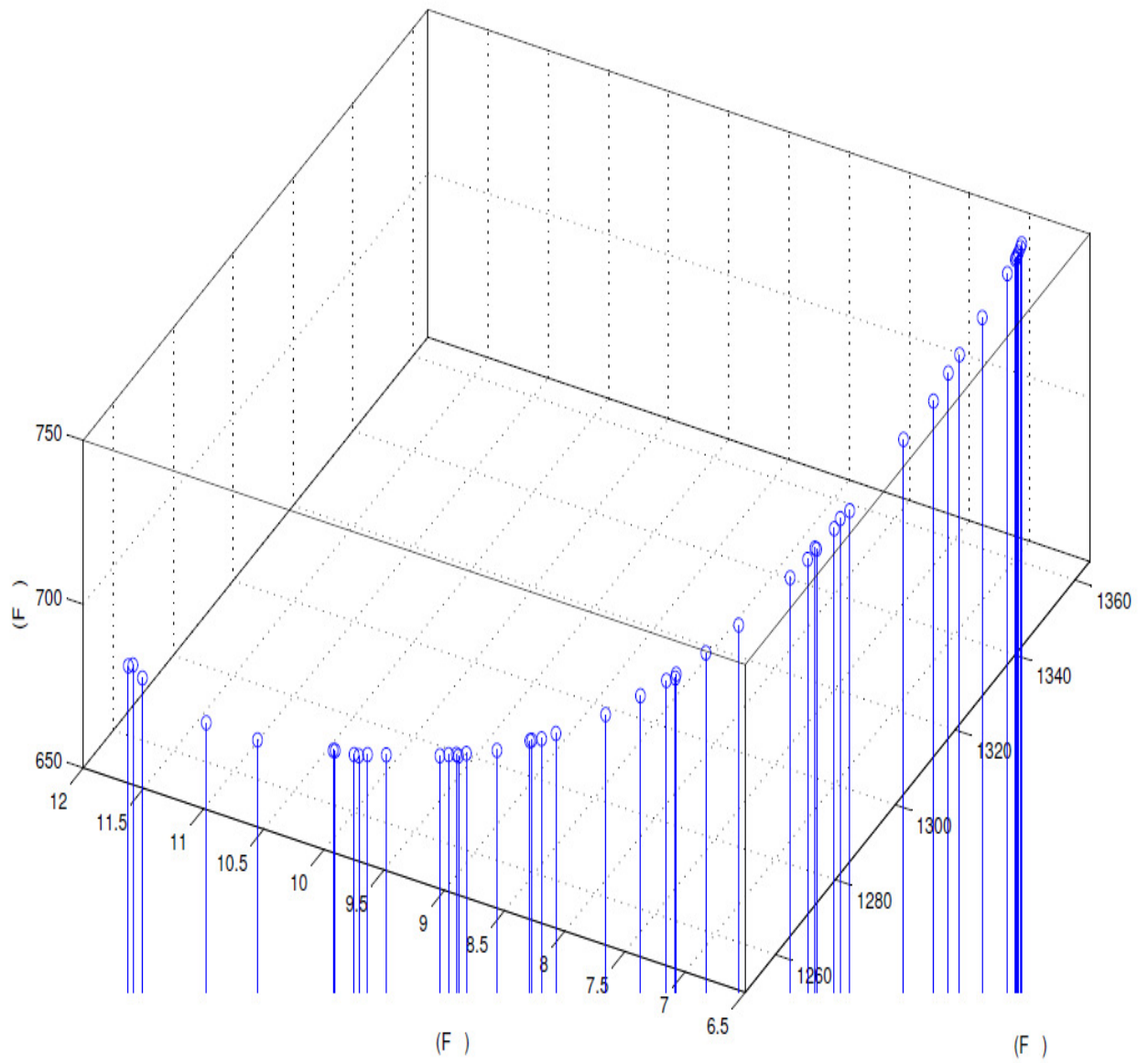


FIG 6.5 NONINFERIOR SET OF IEEE 30 BUS SYSTEM IN 3D SPACE